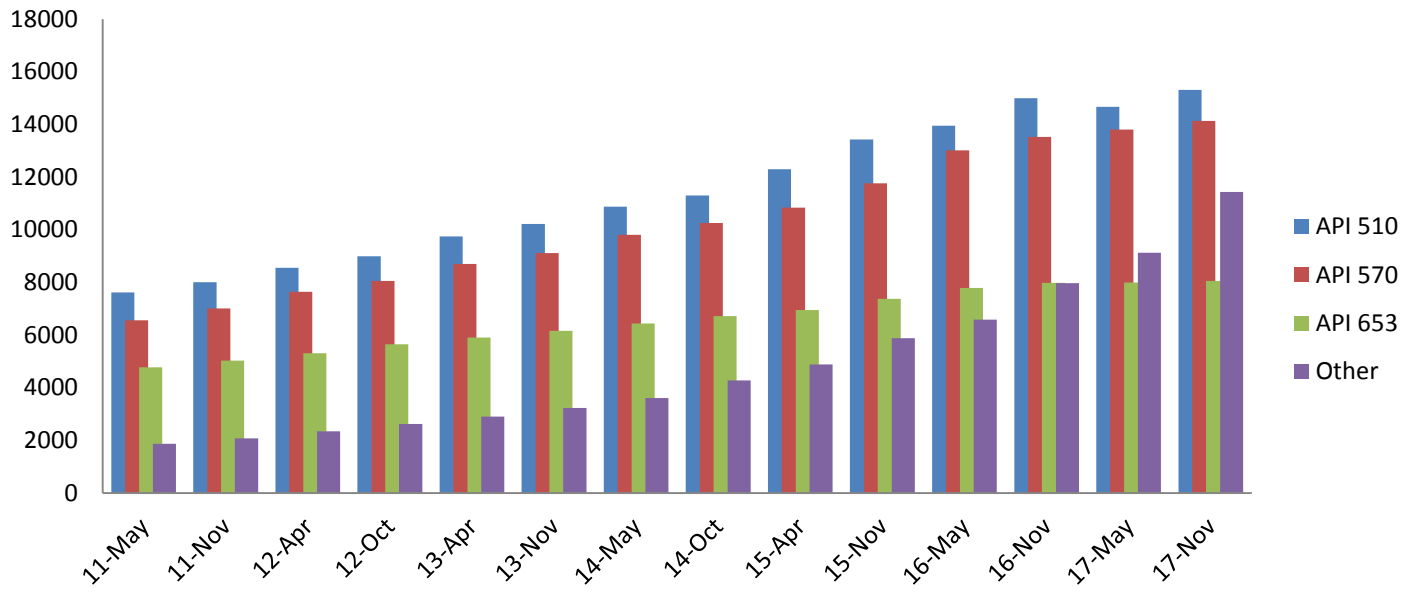

Individual Certification Programs Status Update

Breakdown as of
10/31/2017

Andri Orphanides



Growth of Certificates by Programs



Program	12-Apr	12-Oct	13-Apr	13-Nov	14-May	14-Oct	15-Apr	15-Nov	16-May	16-Nov	17-May	17-Nov
API 510	8556	8994	9746	10221	10871	11300	12290	13424	13946	14992	14663	15304
API 570	7639	8052	8695	9116	9806	10259	10840	11767	13009	13519	13805	14125
API 653	5304	5647	5905	6162	6440	6713	6945	7374	7787	7986	7996	8050
API 936	706	784	901	964	1051	1173	1232	1326	1409	1533	1551	1649
TES	518	572	609	631	629	626	658	678	673	680	649	633
API 571	327	355	382	416	481	595	707	878	988	1147	1211	1314
API 580	419	490	565	645	778	1061	1288	1651	1844	2136	2250	2440
API 577	129	148	161	182	216	283	337	436	484	543	573	600
QUTE	241	269	286	327	339	323	343	373	385	424	385	413
QUSE				18	21	23	27	35	41	55	61	63
QUPA				43	56	62	85	111	132	175	198	242
QUSE-PA												15
SI - FE					33	129	179	294	463	732	850	989
API 1169							30	102	158	522	1357	3020
SI-RE									4	16	33	45
ACP										3	7	8
SIEE											1	1
TOTAL	23863	25335	27279	28725	30721	32547	34961	38449	41,325	44,463	45,590	48,911

From the last report to this one, we notice that the deficit in circulated certificates has diminished. We had a dedicated push to ensure that recertifications were processed and followed up on. We are back to our normal drop off rate.

Certified Inspectors Worldwide



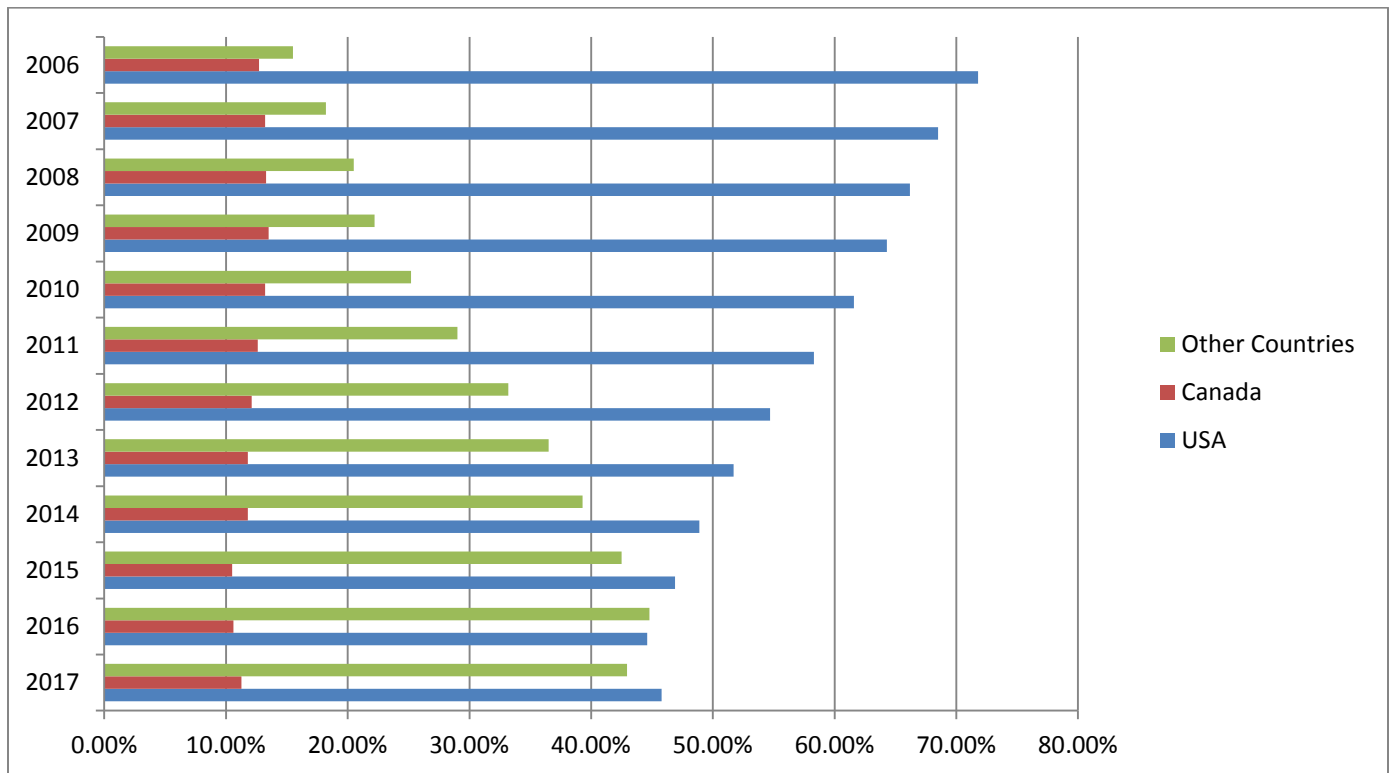
Worldwide Certified Inspectors (Top 10)

Top 10 Countries	Certified Individuals ▼	%GT Certified Individuals
United States	13538	45.76%
Other	6469	21.87%
Canada	3340	11.29%
South Korea	1705	5.76%
United Arab Emirat...	887	3.00%
India	859	2.90%
Malaysia	729	2.46%
Singapore	531	1.79%
Qatar	519	1.75%
United Kingdom	517	1.75%
Egypt	492	1.66%
Total	29586	100.00%

ICP currently has over 29,586* inspectors in 130 countries.

*slight increase from what was reported on 11/15

Percentage Breakdown of Certified Inspectors



Note: 2017 numbers are as of Q3

Year	USA	Canada	Other countries
2006	5350	949	1155
2007	5598	1079	1489
2008	5964	1196	1842
2009	6495	1358	2243
2010	6846	1468	2807
2011	7408	1605	3688
2012	7934	1761	4820
2013	8483	1936	5979
2014	8984	2165	7221
2015	10137	2277	9180
2016	11065	2638	11112
2017	13539	3334	12700

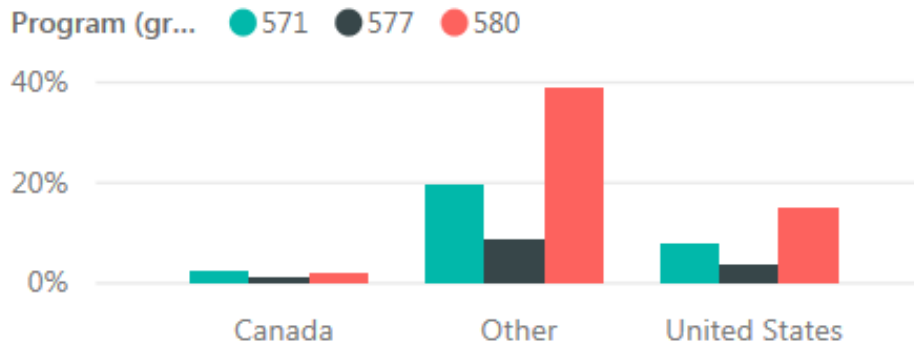
There is a slight shift down from the percentage of international certificates, and Canada has shifted upwards. This is likely created by the increase in 1169 inspectors in the region. 1169 certificates are currently focused in North America.

Global Certificate Distribution (Total by Country)



Top 10 Countries and Others Certificates Distribution

Top 10 Countries (Certificates)	Count of Certificates	%GT Count of Certificates
United States	22537	46.09%
Other	8883	18.17%
Canada	5258	10.75%
Kingdom of Saudi Arabia	3121	6.38%
South Korea	2119	4.33%
United Arab Emirates	1732	3.54%
India	1333	2.73%
Malaysia	1119	2.29%
Qatar	1106	2.26%
Egypt	948	1.94%
United Kingdom	740	1.51%
Total	48896	100.00%

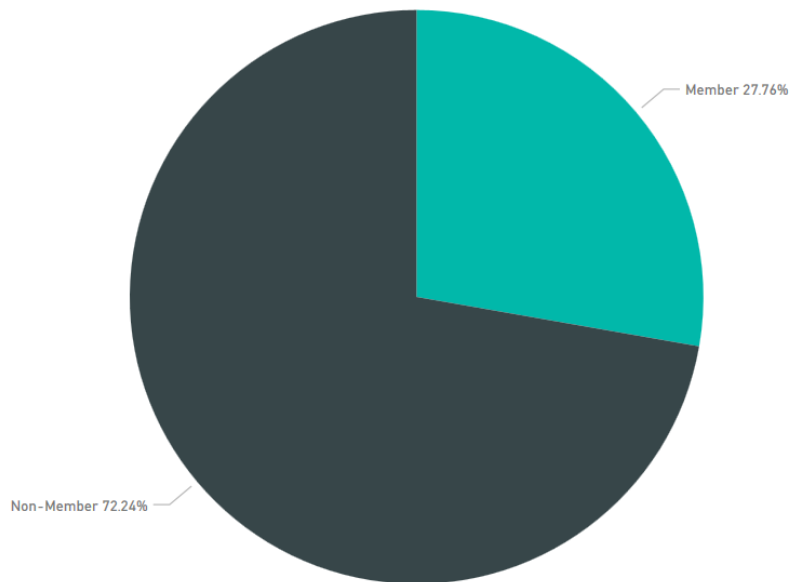


571, 577 and 580 Global Count

US, Canada & Forei...	571	577	580	T. ▲
Canada	114	58	91	263
United States	338	159	658	1155
Other	862	383	1691	2936
Total	1314	6...	2440	4354

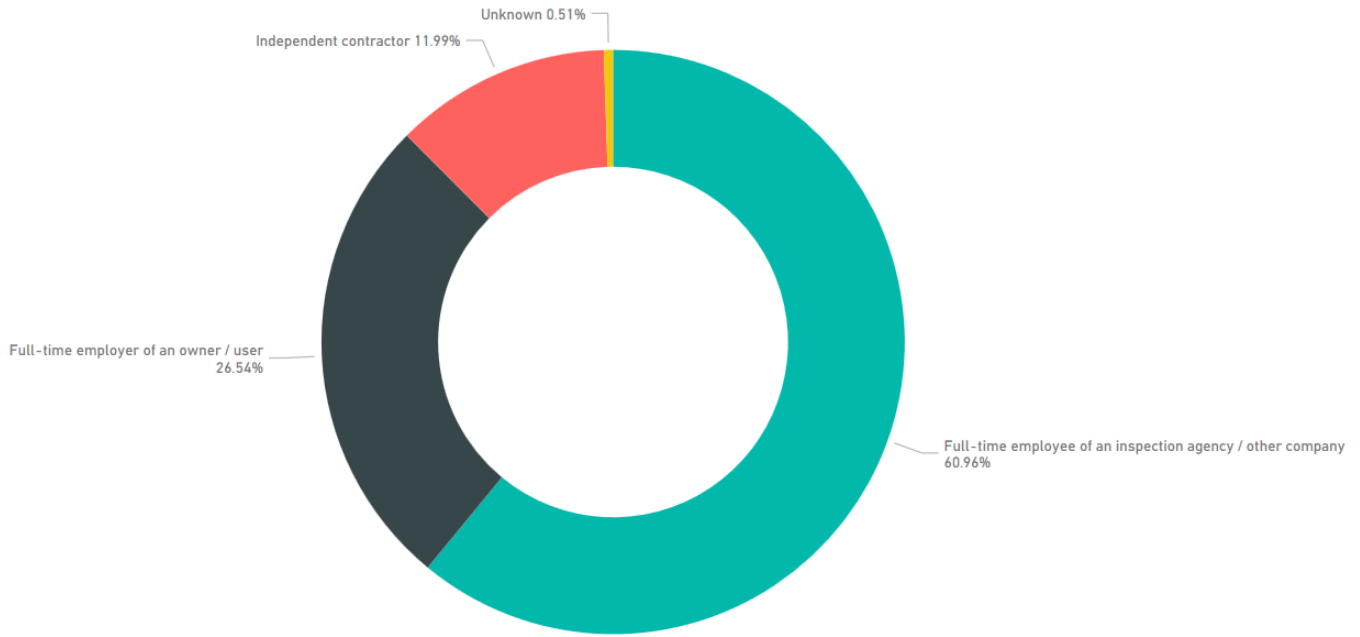
Member vs. Non-Member

CERTIFIED INDIVIDUALS BY MEMBER TYPE

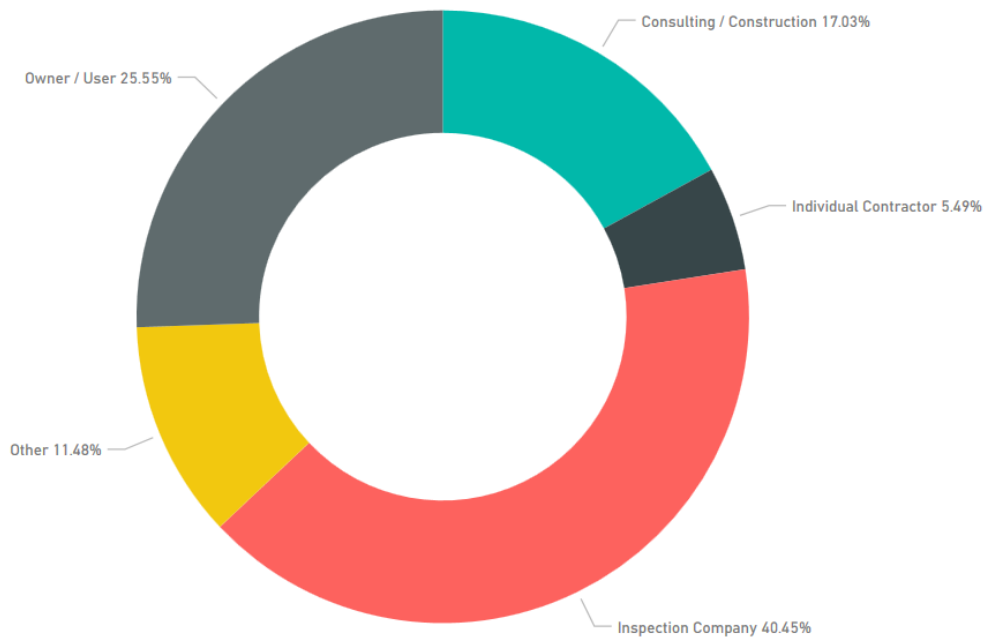


Demographic Breakdown of Certified Inspectors

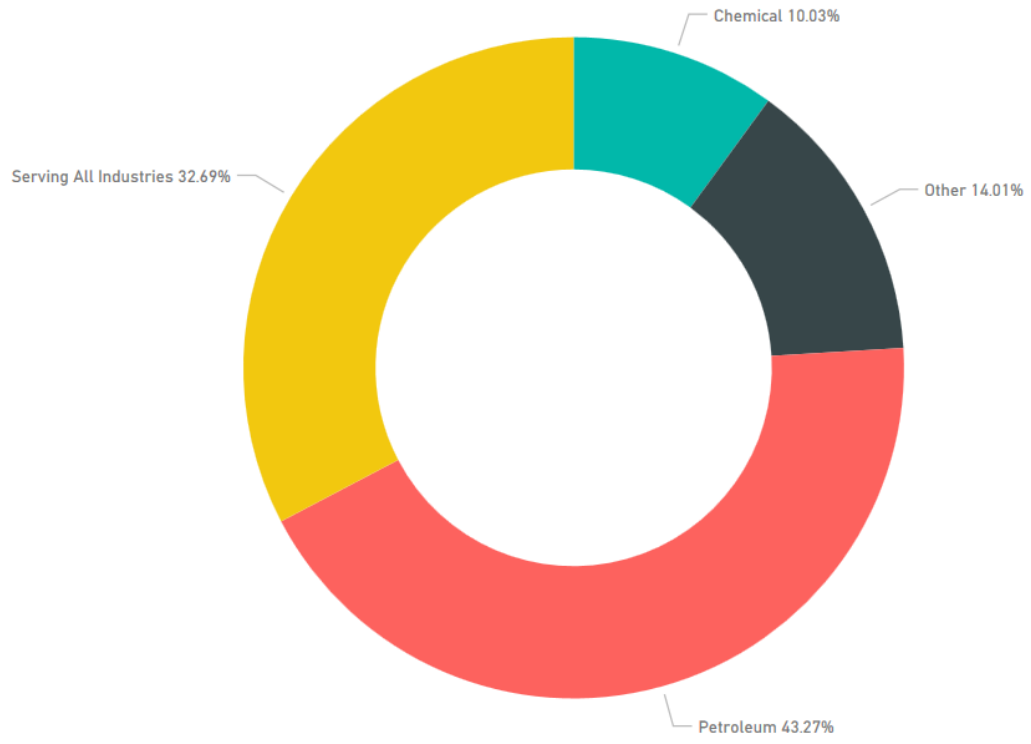
CERTIFIED INDIVIDUALS BY EMPLOYMENT STATUS



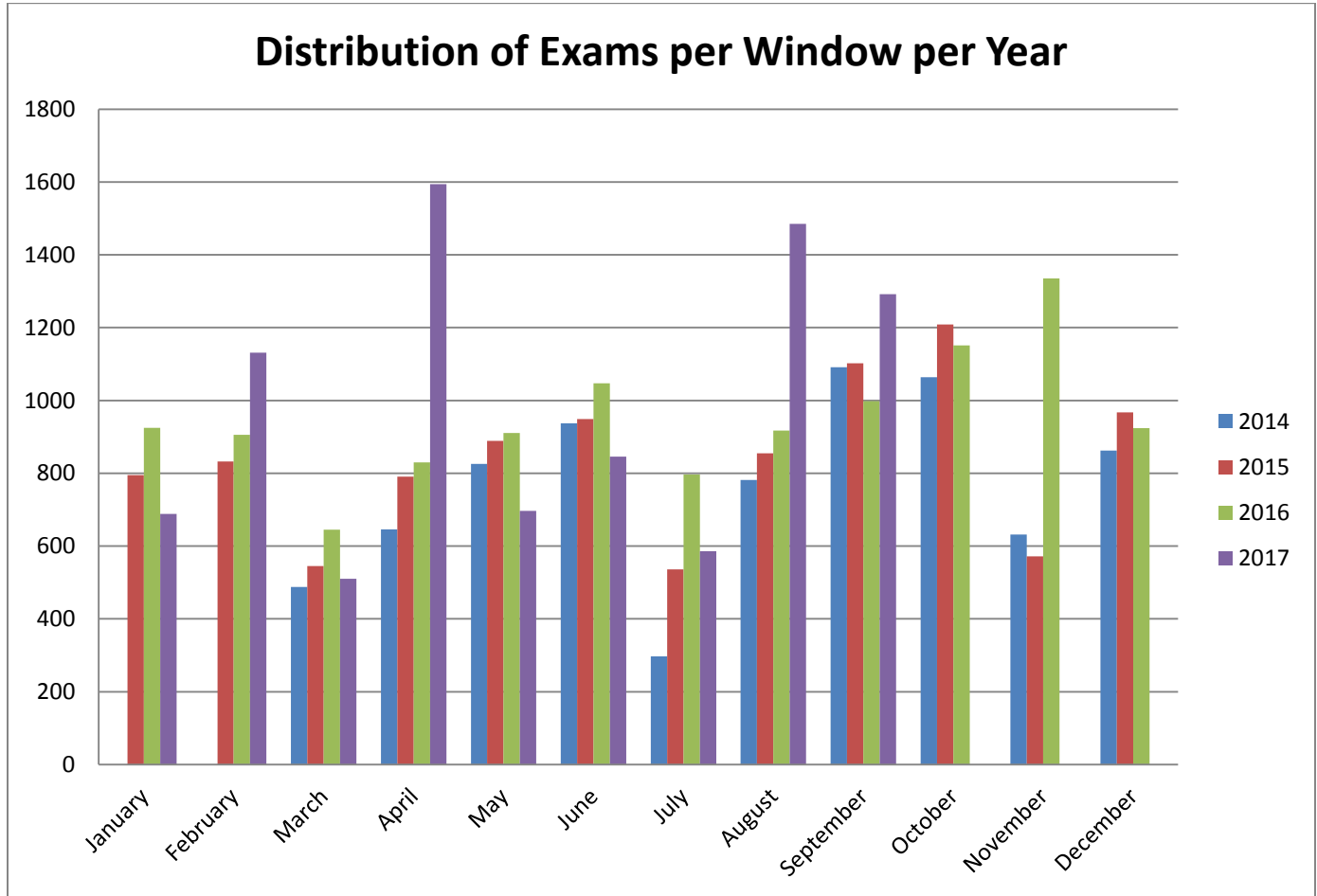
CERTIFIED INDIVIDUALS BY ORGANIZATION TYPE



CERTIFIED INDIVIDUALS BY INDUSTRY SERVED



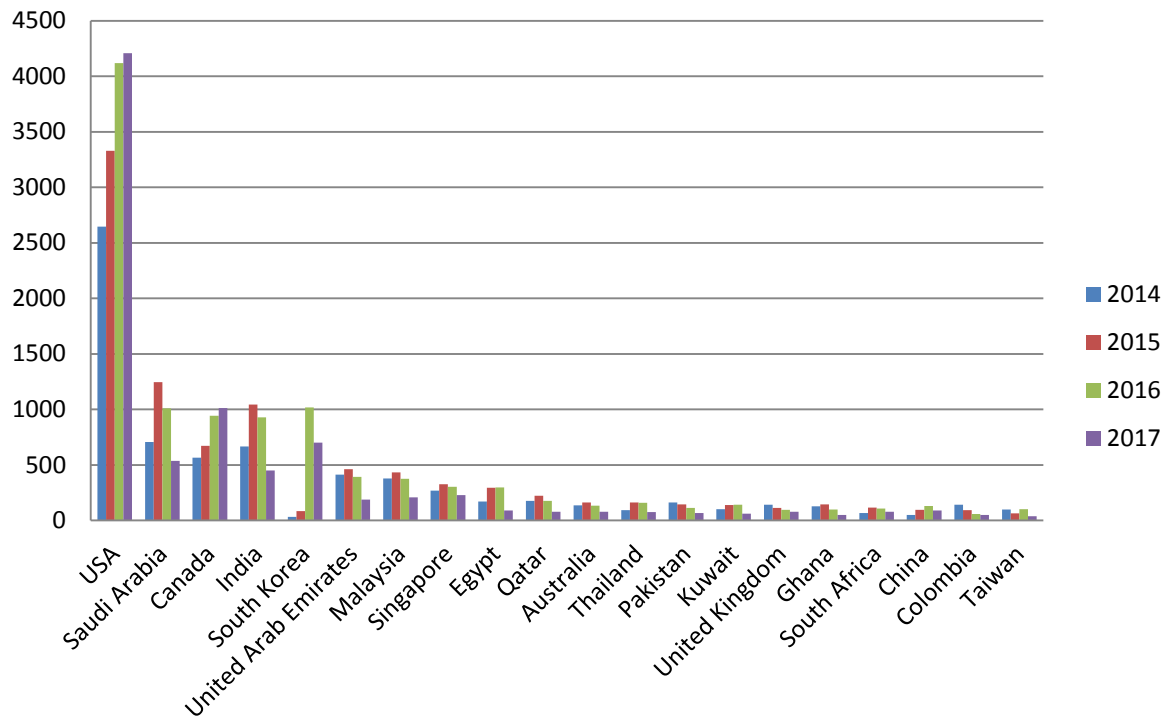
Breakdown of Exams Administered



Within the same time period, the distribution of exams per window was as follows:

Month	2014	2015	2016	2017
January	0	795	925	688
February	0	832	906	1131
March	488	545	645	510
April	646	791	830	1594
May	826	889	911	697
June	937	949	1047	846
July	297	536	797	586
August	782	855	917	1485
September	1091	1102	998	1292
October	1064	1209	1151	0
November	632	572	1335	0
December	862	967	924	0
Total	7625	10042	11386	8829

Top 20 Countries by Exams Administered 2014 - Sept. 2017



Between 2014 and September 2017, ICP administered 37,882 exams in 74 different countries. We have utilized 397 of the over 500 Prometric testing centers around the world.

Above is a chart that shows the top 20 countries by growth since the introduction of computer based testing centers in 2014. As you can see, over time, 35,540 of our exams were delivered in those top 20 countries.

Country Top 20	Total
USA	14305
Saudi Arabia	3497
Canada	3194
India	3088
South Korea	1833
United Arab Emirates	1452
Malaysia	1396
Singapore	1125
Egypt	852
Qatar	651
Australia	510
Thailand	489
Pakistan	485
Kuwait	441
United Kingdom	428
Ghana	415
South Africa	370
China	366
Colombia	342
Taiwan	301
Total	35540

Historical
Exam Performance

API 510 - Pressure Vessel Inspectors

Year	Exam Administration	CANDI-DATES	PASS	FAIL	PASS %	Pass Point
2011	June	742	392	350	52.8	108
	September	440	216	224	49.1	108
	December	833	445	388	53.4	109
2012	June	988	554	434	56.1	109
	September	634	337	297	53.2	109
	December	795	485	310	61.1	90*
2013	June	960	559	401	58.2	90
	September	603	341	262	56.6	90
	December	928	521	407	56.1	86
2014	May	972	530	442	54.5	85
	September	1194	675	519	56.5	85/86
2015	January	875	494	281	56.5	85/86
	May	1048	582	466	55.5	85/86
	September	1208	743	506	61.5	85/86
2016	January	1015	626	389	61.7	85/86
	May	909	541	368	59.4	87/88
	September	1020	607	413	59.5	87/88
2017	January	692	438	254	63.2	87/88
	May	697	416	281	69.7	87/88
	September	831	532	299	64.0	87/88

API 653 - Aboveground Storage Tanks Inspectors

Year	Exam administration	CANDI-DATES	PASS	FAIL	PASS %	PASS POINT
2011	March	586	319	267	54.4	101
	September	660	332	328	50.3	101
2012	March	683	383	300	56.1	105
	September	691	419	272	60.6	107
2013	March	644	364	280	56.5	86
	September	645	381	264	59.1	86
2014	March	462	259	203	56.1	89
	July	329	197	132	60.0	89
	November	540	308	232	57.0	89
2015	March	464	260	204	56.0	89
	July	438	272	166	62.1	89
	November	460	217	243	47.2	90/87
2016	March	493	272	221	55.2	90/87
	July	449	225	224	50.1	90/87
	November	540	240	300	44.4	91
2017	March	382	210	172	55.0	91
	July	401	213	188	53.1	91

API 570 - Piping Inspectors

Year	Exam administration	CANDIDATES	PASS	FAIL	PASS %	PASS POINT
2010	June	815	428	387	52.5	107
	September	351	178	173	50.7	107
	December	735	375	360	51.0	110
2011	June	882	487	395	55.2	108
	September	454	224	230	49.3	108
	December	981	526	455	53.6	110
2012	June	1002	506	496	50.5	110
	September	732	353	379	48.2	111
	December	784	366	418	46.7	86*
2013	June	1078	556	522	51.6	87
	September	730	349	381	47.8	87
	December	941	527	414	56.0	90
2014	June	1133	554	579	48.9	90
	October	1107	548	559	49.5	90
2015	February	1070	517	537	48.3	89
	June	1208	672	536	55.6	89
	October	1318	759	721	57.6	89/90
2016	February	1100	599	501	54.5	89/90
	June	1000	546	454	54.6	89/90
	October	1180	707	473	59.9	89/90
2017	February	742	410	332	55.2	91/92
	June	848	479	369	56.5	91/92
	October*	891	524	367	58.8	91/92

***This is the first administration with the new reduced seat times. There has not been a change in the percentage of applicant's passing.**

API QUTE

Year	Session #	Exam administration	CANDI-DATES	PASS	FAIL	PASS %	
2013	44	January	6	4	2		
	45	January	17	9	8		
	46	February	6	3	3		
	47	February	20	15	5		
	48	March	6	2	4		
	49	May	18	10	8		
	50		6	5	1		
	51		24	15	9		
	52	July	16	9	7		
	53	August	13	10	3		
	54	September	18	10	8	55.6	
55	November	18	10	8	55.6		
2014	56	January	15	11	4		
	57	March	5	0	5		
	58	May	19	12	7		
	59	July	25	11	14		
	60	September	18	11	7		
	61	November	20	13	7	65	
2015	62	January	10	5	5		
	63	February I	8	4	4		
	64	February II	4	1	3		
	65	March	24	17	7	70.8%	
	66	May	27	23	4	85.2	
	67	July	10	7	3	70	
	68	August	13	10	3	76.9	
	69	September	6	4	2	66.7	
	70	October	7	5	2	71.4	
	71	November	17	12	5	70.6	
	72	December	4	1	3	25.00	
2016	74	January	15	10	5	66.67	
	76	March	29	22	7	75.86	
	77	June	30	17	13	56.67	
	78		3	2	1	66.67	
	79		22	12	10	54.55	
	80	September	15	10	5	66.67	
	81	November	17	10	7	58.82	
	2017	82	January	16	10	6	62.50
		83	March	20	12	8	60
84			16	12	4	75	
85			17	11	6	64.7	
86			13	8	5	61.5	
		July Special Session	9	9	0	100	

API QUSE

Year	Exam administration	CANDI-DATES	PASS	FAIL	PASS %
2007	pilot		3		
2009	December	11	1	10	9
2010	No applications				
2011	July	5	3	2	60
	November	4	2	2	50
2012	March	3	1	2	
	June	1	0	1	0
	November	1	0	1	
2013	March	6	3	3	
	September	7	5	2	
	November	6	2	4	33.3
2014	January	1	1	0	
	July	3	2	1	
	September	1	1	0	
2015	January	3	2	1	
	February I	15	1	14	
64	February II	-	-	-	
65	March	9	2	7	22.2
66	May	4	3	1	75
67	July	9	3	6	33.3
68	August	2	0	2	0
69	September	4	1	3	75
71	November	4	0	4	0
72	December	2	0	2	0
2016, 74	January	9	5	4	55.56
76	March	8	1	7	12.5
77	June	10	4	6	40.00
78		7	2	5	28.57
79		15	6	9	40
80	September	6	2	4	33.33
81	November	11	8	3	72.73
2017, 82	January	6	2	4	33.33
83	March	3	1	2	33.33
84		1	0	1	0
85		0	0	0	0
86		1	0	1	0
	July Special Session	8	5	3	62.5

API QUPA

Year	Exam administration	CANDI-DATES	PASS	FAIL	PASS %
2007	pilot		3		
2009	December	11	1	10	9
2010	No applications				
2011	July	5	3	2	60
	November	4	2	2	50
2012	March	3	1	2	
	June	1	0	1	0
	November	1	0	1	
2013	March	6	3	3	
	September	7	5	2	
	November	6	2	4	33.3
2014	January	1	1	0	
	July	3	2	1	
	September	1	1	0	
2015	January	3	2	1	
	February I	15	1	14	
64	February II	-	-	-	
65	March	9	2	7	22.2
66	May	4	3	1	75
67	July	9	3	6	33.3
68	August	2	0	2	0
69	September	4	1	3	75
71	November	4	0	4	
72	December	2	0	2	
2016, 74	January	9	5	4	80.00
76	March	8	1	7	71.43
77	June	13	12	1	92.31
78		3	2	1	66.67
79		18	11	7	61.11
80	September	5	4	1	80
81	November	10	8	2	80
2017, 82	January	11	11	0	100
83	March	20	15	5	75
84		19	12	7	63
85		13	10	3	76.9
86		18	13	5	72.2
	July Special Session	9	9	0	100

API QUSE-PA

Year	Exam administration	CANDI-DATES	PASS	FAIL	PASS %
2017	pilot	20	10	10	50
85		5	4	1	80
86		2	1	1	50
	July Special Session	15	12	3	80

API TES – Tank Entry Supervisors

YEAR	EXAM ADMINISTRATI ON	CANDI- DATES	PASS	FAIL	PASS %	PASS POINT (OUT OF 120)
2011	March	139	62	77	44.6	86
	September	121	47	74	38.8	86
2012	March	108	62	46	57.4	79
	September	105	67	38	63.8	79
2013	March	70	38	32	54.3	75
	September	51	28	23	54.9	75
2014	March	48	24	24	50	75
	July	23	10	13	43.5	75
	November	68	47	21	69.1	75
2015	March	27	12	15	44.4	75
	July	34	28	6	82.4	75
	November	27	19	8	70.4	76/74
2016	March	19	12	7	63.2	76/74
	July	22	13	9	59	76/74
	November	26	19	7	73.1	76/74
2017	March	16	12	4	75	76/74
	July	34	26	8	76.5	76/74

API 936 - Refractory Personnel

Year	Exam administration	CANDI- DATES	PASS	FAIL	PASS %	PASS POINT (out of 75)
2011	February	12	9	3	75	51
	June	91	58	33	63.7	51
	December	154	109	45	70.8	51
2012	June	117	87	30	74.4	51
	December	141	102	39	72.3	51
2013	June	103	70	33	68.0	51
	December	159	103	56	64.8	51
2014	April	57	34	23	59.6	51
	August	144	98	46	68.0	51
	December	118	78	40	66.1	51
2015	April	95	67	25	72.8	51
	August	99	74	25	74.7	51
	December	145	112	33	77.2	51
2016	April	89	67	22	75.3	51
	August	128	88	40	68.8	51
	December	134	99	35	73.9	51
2017	April	92	65	27	70.7	51
	August	94	67	27	71.3	51

API 571 - Corrosion and Materials Professional

Year	Exam administration	CANDIDATES	PASS	FAIL	PASS %	PASS POINT (out of 70)
2011	March	89	34	55	38.2	49
	September	86	27	59	31.4	49
2012	March	102	28	74	27.5	49
	September	127	37	90	29.1	49
2013	March	109	36	73	33.0	49
	September	193	69	124	35.8	49
2014	April	159	97	62	61.0	49
	August	174	74	100	42.5	49
	December	251	105	146	41.8	49
2015	April	197	85	112	43.1	49
	August	240	103	137	42.9	49
	December	258	112	146	43.4	49
2016	April	179	78	101	43.6	49
	August	191	86	105	45	49
	December	223	82	141	36.8	49
2017	April	157	72	85	45.9	49
	August	125	61	64	48.8	49

API 580 - Risk Based Inspection Professional

Year	Exam administration	CANDIDATES	PASS	FAIL	PASS %	PASS POINT (out of 70)
2011	March	140	49	91	35.0	49
	September	147	59	88	40.1	49
2012	March	200	70	130	35.0	49
	September	244	90	154	39.7	49
2013	March	238	91	147	38.2	49
	September	319	138	181	43.3	49
2014	April	316	168	148	53.2	49
	August	300	159	141	53.0	49
	December	405	192	213	47.4	49
2015	April	357	178	179	49.9	49
	August	371	205	166	55.3	49
	December	404	205	199	50.7	49
2016	April	301	154	147	51.1	49
	August	274	88	181	32.1	49
	December	317	170	147	53.6	49
2017	April	221	128	93	57.9	49
	August	178	114	64	64.0	49

API 577 - Welding Inspection and Metallurgy Professional

Year	Exam administration	CANDIDATES	PASS	FAIL	PASS %	PASS POINT (out of 70)
2011	March	33	19	14	57.6	49
	September	29	14	15	48.3	49
2012	March	32	20	12	62.5	49
	September	24	15	9	62.5	49
2013	March	38	21	17	55.2	49
	September	54	36	18	66.7	49
2014	April	79	42	37	53.2	49
	August	67	29	38	43.3	49
	December	104	54	50	41.9	49
2015	April	93	51	42	54.8	49
	August	102	55	47	53.9	49
	December	91	52	39	57.1	49
2016	April	179	78	101	43.6	49
	August	54	27	27	50	49
	December	71	44	27	62	49
2017	April	38	21	17	55.3	49
	August	48	22	26	45.8	49

API SIFE - Source Inspector Fixed Equipment

Year	Exam administration	CANDIDATES	PASS	FAIL	PASS %	PASS POINT (out of 100)
2013	November	60	33	27	55	70
2014	April	61	38	23	62.3	70
	August	109	58	51	53.2	70
	December	86	50	36	58.1	70
2015	April	98	56	42	57.1	70
	August	93	62	31	66.7	70
	December	228	171	57	75	70
2016	April	173	125	48	72.2	70
	August	236	154	82	65.3	70
	December	170	103	67	60.6	70
2017	March	60	41	19	68.3	70
	July	106	84	22	79.2	70
	September (Special)	97	87	10	89.7	70

API SIRE - Source Inspector Rotating Equipment

Year	Exam administration	CANDIDATES	PASS	FAIL	PASS %	PASS POINT (out of 100)
2015	December	9	4	5	44.4	70
2016	April	15	7	8	46.7	70
	August	25	6	19	24	70
	December	30	10	20	33.3	70
2017	March	22	7	15	31.8	70
	July	31	13	18	41.9	70

API SIEE - Source Inspector Electrical Equipment

Year	Exam administration	CANDIDATES	PASS	FAIL	PASS %	PASS POINT (out of 100)
2016	December	2	0	2	0.0	70
2017	March	10	1	9	10.0	70
	July	7	0	7	0.0	70

API ACP - Auditor Certification

IAQ1					
Year	Exam administration	CANDI-DATES	PASS	FAIL	PASS %
2016	March	6	2	4	33.3
	August	2	1	1	50.0
2017	March	2	0	2	0.0
	July	2	0	2	0.0

IAQ2					
Year	Exam administration	CANDI-DATES	PASS	FAIL	PASS %
2017	March	1	1	0	100.0

AQ1					
Year	Exam administration	CANDI-DATES	PASS	FAIL	PASS %
2016	March	1	0	1	0.0
	August	2	0	2	0.0
	December	4	0	4	0.0
2017	March	6	0	6	0.0
	July	6	1	5	16.7

LAQ1					
Year	Exam administration	CANDI-DATES	PASS	FAIL	PASS %
2016	March	1	0	1	0.0
	August	1	0	1	0.0
	December	2	0	2	0.0
2017	March	11	3	8	27.3
	July	3	0	3	0.0

LAQ2					
Year	Exam administration	CANDI-DATES	PASS	FAIL	PASS %
2016	March	1	0	1	0.0
	August	6	0	6	0.0
	December	1	1	0	0.0
2017	March	1	0	1	0.0
	July	1	0	1	0.0

API 1169 - Pipeline Inspector

YEAR	EXAM ADMINISTRATION	CANDI-DATES	PASS	FAIL	PASS %	PASS POINT
2014	November	67	35	32	52.2	68
2015	March	76	41	35	53.9	68
	July	69	32	37	46.4	68
	November	102	58	44	56.9	68
2016	March	135	98	37	72.6	69/70
	June Special	47	46	1	97.9	69/70
	July	325	266	59	81.9	69/70
	November	770	632	138	82.1	69/70
2017	January	392	306	86	78.1	69/70
	April	1088	861	227	79.1	70/71
	August	1031	777	254	75.4	70/71
	September/October	364	269	95	73.9	70/71